



SIGMA - SSLIA

TEXTILE INTERVENTION JACKET AND TROUSER LEVEL 2

Performance collection



NF EN ISO 13688+A1:2021



NF EN 469+A1:2020 X2 Y2 Z2



NF EN ISO 1149-5:2018 - ZONE ATEX 1, 2, 20, 21, 22



Ref veste : **SIGMA/V/RGBR**
Ref pantalon : **SIGMA/P/RGBR**

GENERAL CHARACTERISTICS

Navy blue

Red



BASIC COLORS

Orange Yellow Black PBO Two colored



OTHER COLORS ON QUOTE

YELLOW PRISMATIC TAPES

Color : PBO

Jacket sizes : from 80 to 128 / **Trousers sizes** : 1, 2, 3, 4 / **Length** : C, M, L, XL

Weight jacket : env.1,90kg / **weight trouser** : env. 1,70kg / **Packing** : individual

Cleaning : / **Customs code** : 62032310

Set navy and black : red stitchings

Set red, orange, yellow, PBO : blue stitchings

MATERIAL COMPOSITION



Outer fabric	TWINTEX® - 81% Kermel®, 18 % para-aramid, 1% antistatic - 225 g/m²
Membrane - PTFE	100% aramid laminé non tissé, membrane PTFE bi-composant - 140g/m²
Inner lining	TWIN SPACER® 34,5% para-aramid, 33,5% viscose FR, 32% méta-aramid, antistatic - 200g/m²

DETAILS LONG JACKET

External

- Neck high, wide, flap, officer shape closed by self-gripping
- Shoulders reinforced with comfort foam covered with the same outer fabric
- Central anti-panic closure 60cm, under wide flap
- BIP pocket with flap, left side above the band
- Adjustable wrists with self-gripping adjusting tab
- Rib edge and integrated thumb-rest
- Grey passepoil with shoulder reinforcements and central closure
- Velcro support for breast grade 5x5cm
- 2 low pockets closed by flap and self-gripping
- 50mm microprism tapes: chest, arm, jacket stockings, vertical

Inner

- Half-moon and hanging tapes
- 3 horizontal spacer pads in the back preserve an air layer between the lining and the outer layer
- 1 inside pocket on the lining closed by flap and velcro
- Anti-capillarity fabric at cuffs and hem
- Access panel in inner lining

DETAILS TROUSERS

External

- Adjustable hangers 4 strands, removable, crossed in the back attached to trousers by self-gripping
- Semi-elasticated waist on both sides of the trousers
- Hook and fly closure
- Knee reinforcements with outer fabric doubling
- Side opening of 80cm under flap with contrasting colored bellows for putting on boots
- Grey piping over knee reinforcements
- 50mm horizontal and vertical microprism tapes

Inner

- Anti-capillarity fabric at the bottom of the legs
- Access panel in the inner lining of the trousers



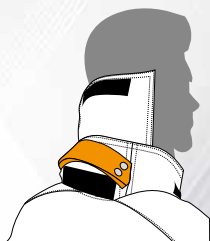
MARTINAS

Fabricant textile depuis 1987

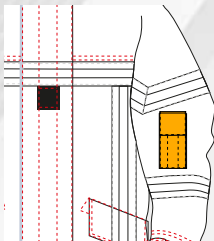
CUSTOMISING YOUR GARMENT

JACKET OPTIONS

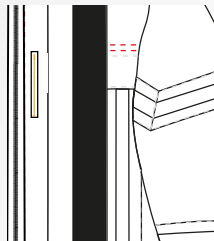
Rescue tapes



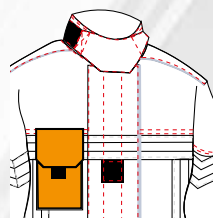
Sleeve pockets



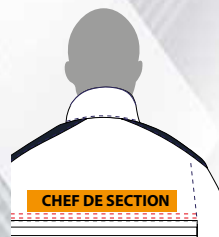
Napoleon pocket



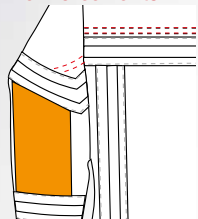
Right/left side radio pocket



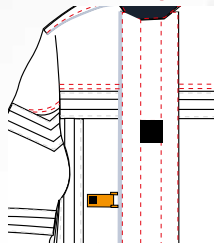
Velcro back plate



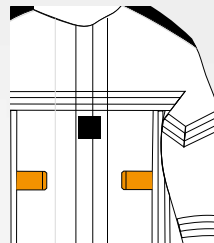
Kevlar elbow reinforcements



Glove clamp

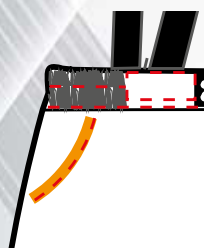


Belt tunnel

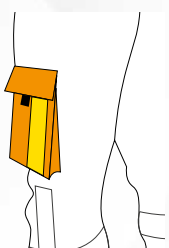


TROUSER OPTIONS

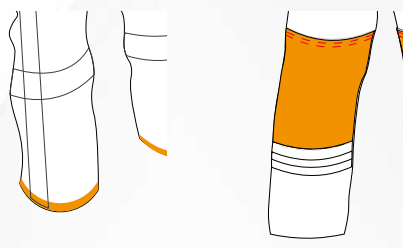
Italian pocket



Cargo pocket

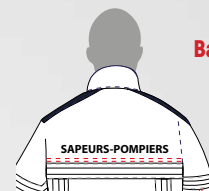


Low and knees Kevlar reinforcements

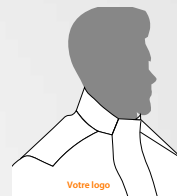


TYPES OF MARKING

Back marking



Chest Marking



Thermobonding

Silkscreen

Embroidery

Digital Printing

Scutching

Our team is fully mobilized and available to support you in your requests.

We provide you with a rapid, personalized answer adapted to the risks you face daily. Do not hesitate to contact us!

SIZE GUIDE

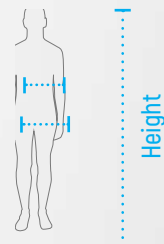
* Sizes over 128 are increased by 25%

Size	80				88				96				104				112				120				128*			
	C	M	L	XL	C	M	L	XL	C	M	L	XL	C	M	L	XL	C	M	L	XL	C	M	L	XL	C	M	L	XL
Chest size	76 - 84				84 - 92				92 - 100				100 - 108				108 - 116				116 - 124				124 - 132			
Height	158	170	182	194	158	170	182	194	158	170	182	194	158	170	182	194	158	170	182	194	158	170	182	194	158	170	182	194
	-	-	-	-	-	-	-	-	-	-	-	-	-	-	-	-	-	-	-	-	-	-	-	-	-	-	-	-
	170	182	194	206	170	182	194	206	170	182	194	206	170	182	194	206	170	182	194	206	170	182	194	206	170	182	194	206

* Sizes over 3 are increased by 25%

Size	1				2				3				4*			
	C	M	L	XL	C	M	L	XL	C	M	L	XL	C	M	L	XL
Waistband	76-92				92-108				108-120				>120			
Height	152	164	176	>188	152	164	176	>188	152	164	176	>188	152	164	176	>188
	-	-	-	-	-	-	-	-	-	-	-	-	-	-	-	-
	164	176	188		164	176	188		164	176	188		164	176	188	

Chest size
Waistband



Take your measurements carefully, directly on the body and without tightening. If you are not sure which size to choose, always choose the larger size!



SERVICE & WARRANTY

Our company takes care of the after-sales service of the products: repairs following the estimate.