

# α

# ALPHA

## TEXTILE INTERVENTION JACKET AND TROUSER LEVEL 2



NF EN ISO 13688+A1:2021



NF EN 469+A1:2020 X2 Y2 Z2



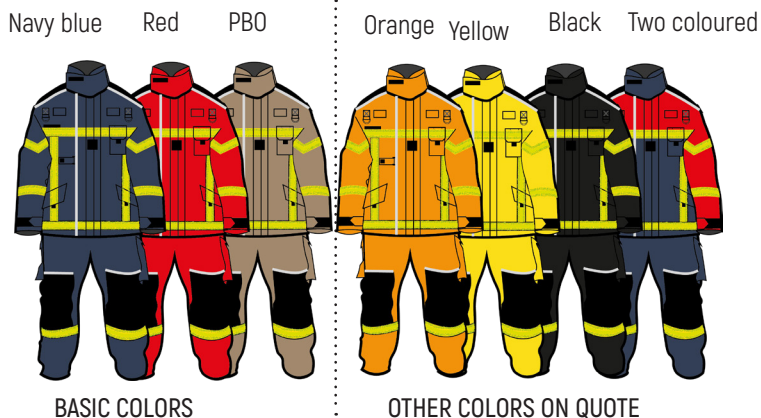
NF EN ISO 1149-5:2018 - ZONE ATEX 1, 2, 20, 21, 22



Ref jacket :  
**ALPHA/V/BLMTT**

Ref trouser  
**ALPHA/P/BLMTT**

### GENERAL CHARACTERISTICS



### TRIPLE TRIM MICROPRISM TAPE MODEL

**Jacket sizes :** from 80 to 120 / **Trousers sizes :** 1, 2, 3, 4, 5 / **Length :** C, M, L, XL

**Weight jacket :** env.1,95kg / **weight trouser :** env. 1,65kg / **Packing :** individual

**Cleaning :** **Customs code :** 62032310

**Set navy and black :** red stitchings

**Set red, orange, yellow, PBO :** blue stitchings

### MATERIAL COMPOSITION



<b>Outer fabric</b>	TWINTEX® - 81% Kermel®, 18 % para-aramid, 1% antistatic - 225 g/m²
<b>Membrane - PTFE</b>	100% aramid laminé non tissé, membrane PTFE bi-composant - 140g/m²
<b>Inner lining</b>	TWIN SPACER® 34,5% para-aramid, 33,5% viscose FR, 32% méta-aramid, antistatic - 200g/m²

### DETAILS SHORT JACKET

- Officer-style stand-up collar with wide hook-and-loop closure
- Hanging loop at back of collar for cable routing
- Kevlar-reinforced shoulders
- 60 cm front zipper with wide hook-and-loop storm flap
- Grey piping under shoulder reinforcements and along front closure
- 1 strap and 1 D ring on each side of the chest
- Adjustable cuffs with hook-and-loop tab
- Elastic ribbed cuffs with thumb loop
- Pre-shaped Kevlar elbow reinforcements
- Hook-and-loop patch for name tape (11.5 × 2 cm) on right chest
- Hook-and-loop patch for rank badge (5 × 5 cm)
- Two lower pockets with hook-and-loop flap closure and pull tab
- 1 Left radio pocket with three gussets (fits all radio sizes)
- 50 mm TT microprism reflective bands on chest, arms, hem, and vertical strip (H-shape silhouette)
- 1 Napoleon pocket under front flap with zipper closure
- 1 internal patch pocket with hook-and-loop closure on lining
- Three horizontal spacer pads on back

### DETAILS TROUSERS WITH ENHANCEMENT

- Wide removable elastic suspenders with quick-release adjustment
- Semi-elastic waistband on each side
- Front closure with hooks and fly
- Two cargo pockets with hook-and-loop flap closure
- Pre-shaped Kevlar knee reinforcements
- Grey piping above knee reinforcements
- 35 cm side opening under flap with contrast-colored gusset for easy boot entry
- Kevlar reinforcements at lower leg
- 50 mm TT microprism reflective bands

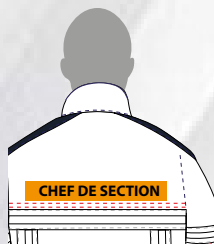
#### Inner jacket and trouser

- Anti-wicking fabric at sleeve ends, jacket hem, and trouser hems
- Inspection opening in inner lining

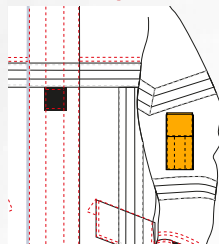
## GARMENT CUSTOMIZATION

### JACKET OPTIONS

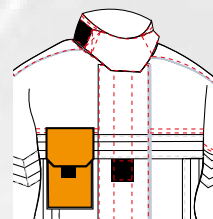
Velcro back plate



Sleeve pockets

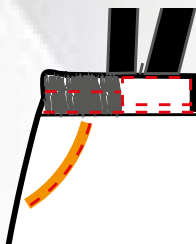


Right side radio pocket



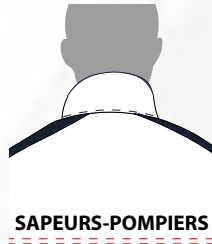
### TROUSER OPTIONS

Italian pocket

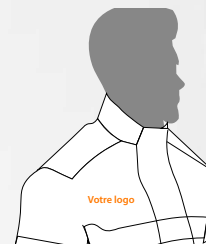


### TYPES OF MARKING

Back marking



Chest Marking



Thermobonding  
Silkscreen  
Embroidery  
Digital Printing  
Scutching

### TYPES OF TAPES

GLASS BEAD TAPES



PRISMATICS TAPES



Our team is fully mobilized and available to support you in your requests.  
We provide you with a rapid, personalized answer adapted to the risks you face daily. Do not hesitate to contact us!

## SIZE GUIDE

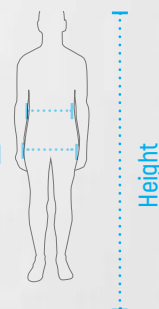
\* Sizes over 120 are increased by 25%

JACKET SIZES	Size	80				88				96				104				112				120*			
	Chest size	C	M	L	XL	C	M	L	XL	C	M	L	XL	C	M	L	XL	C	M	L	XL	C	M	L	XL
		84-92				92-100				100-108				108-116				116-124				124-132			
	Height	158	170	182	194	158	170	182	194	158	170	182	194	158	170	182	194	158	170	182	194	158	170	182	194
		-	-	-	-	-	-	-	-	-	-	-	-	-	-	-	-	-	-	-	-	-	-	-	-
		170	182	194	206	170	182	194	206	170	182	194	206	170	182	194	206	170	182	194	206	170	182	194	206

\* Sizes over 3 are increased by 25%

TROUSERS SIZES	Size	1				2				3				4*				5*			
	Waistband	C	M	L	XL	C	M	L	XL	C	M	L	XL	C	M	L	XL	C	M	L	XL
		<76				76-92				92-108				108-120				>120			
	Height	152	164	176	>188	152	164	176	>188	152	164	176	>188	152	164	176	>188	152	164	176	>188
		-	-	-	-	-	-	-	-	-	-	-	-	-	-	-	-	-	-	-	-
		164	176	188		164	176	188		164	176	188		164	176	188		164	176	188	

Chest size  
Waistband



Take your measurements carefully, directly on the body and without tightening. If you are not sure which size to choose, always choose the larger size!



Our company takes care of the after-sales service of the products: repairs following the estimate.

Martinas: Artisan of safety at work

www.martinas.fr | +33 (0)3 88 51 72 68 | info@martinas.fr | 5, rue du Portugal, 67230 BENFELD